



The 2022-2023 College of Health & Human Performance Prevention Science Initiative

MATERNAL & CHILD HEALTH

*Bringing the health needs of
women, children, and families to the forefront.*

WHY MATERNAL CHILD HEALTH?

Maternal and child health (MCH) focuses on health issues concerning women, birthing people, children, and families, such as reproductive health, access to prenatal and well-childcare, quality of care before delivery and after giving birth, infant and maternal mortality prevention, newborn screening, child immunizations, child nutrition and services, and services for children with special healthcare needs.

Our goal is to increase awareness of MCH issues and to demonstrate the chasm in access to maternal and child healthcare in the US. This chasm results in persistent health inequities among women, birthing people, children, and their families from rural, historically marginalized racial/ethnic groups, and socioeconomically disadvantaged backgrounds.

UPCOMING 2023 EVENTS

February 16th: Film Festival, "America's War on Abortion" from 12:30-2pm AND "Reclaiming Power: The Black Maternal Health Crisis" from 6-8pm with panel discussion - Black Box Theater

April 3rd - 6th & 10th: MCH Section at Research and Creative Achievement Week

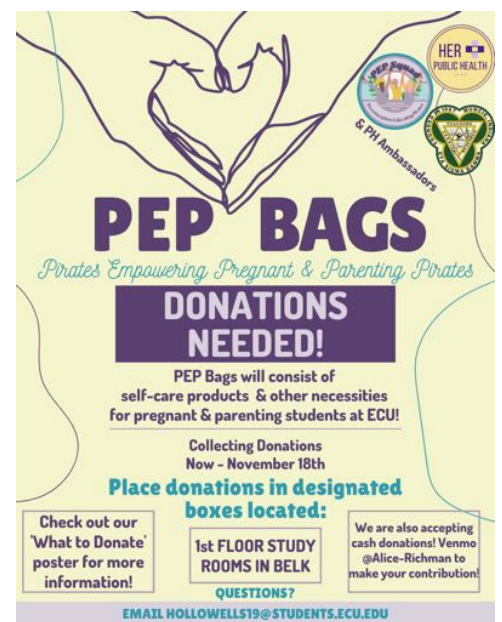
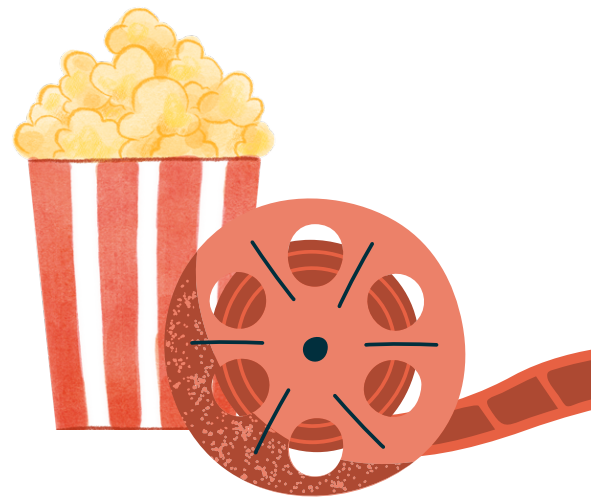
RESOURCES (HYPERLINKED)

Critical Term - A Documentary that Discusses the Maternal Health Crisis Among Mothers

March of Dimes: Healthy Moms, Strong Babies: Millions of Americans, largely in the midwest and south are losing access to maternal care (no access to obstetric care, obstetric providers or birth centers)

FALL 2022 SERVICE EVENT

HHP students led a drive for self-care products and necessities for pregnant and parenting students at ECU. It was a collaboration between Preconception Educating Pirates (PEP) Squad, Her+ Public Health, Eta Sigma Gamma, Public Health Ambassadors, and Purple Pantry. They were able to raise over \$200 and created in excess of 350 bags to give away to pregnant and parenting students.



FOR MORE INFORMATION CONTACT DR. KRISTIN BLACK (BLACKKR18@ECU.EDU), DR. ALICE RICHMAN (RICHMANA@ECU.EDU) OR MS. KELLI RUSSELL (RUSSELLK14@ECU.EDU)